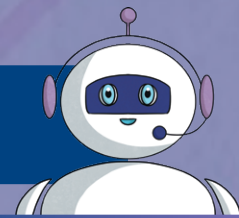


# AI Disclaimer

Any factual information within this resource is accurate and based on current research as of April 2023. Any assumptions made in the analysis of this resource are not reflective of the position of Twinkl in relation to AI. Twinkl neither endorses nor is affiliated with any AI system referred to in this resource. AI systems are only as good as the data they are trained on and are vulnerable to bias and can provide incorrect information, therefore human editing is always advised. In order to ensure privacy is maintained, personal and sensitive data must not be entered into AI tools. Twinkl cannot be held responsible for the use of external AI tools; protecting children from harmful content online, including that generated by AI, should be of the utmost importance. As always, please ensure you check the suggested age-rating for any AI tools you choose to use.

# Artificial Intelligence (AI)



## What Is AI?

Artificial intelligence (AI) refers to technology that can make computers learn and have human-like intelligence.

## The History of AI

Although artificial intelligence can be traced back as far as ancient times, the modern world of AI that we know today started to develop in the mid-20<sup>th</sup> century.

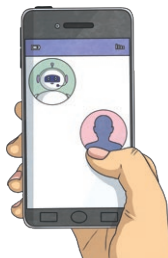
## Advantages of AI

- With AI, human error is less likely.
- AI does not need to rest and can be available at all times.
- AI can be programmed to do repetitive tasks easily.



## Disadvantages of AI

- AI can be very expensive.
- AI only knows what it has previously been shown.
- AI may occasionally break and have technical glitches or errors.



## How Is AI Used Today?

AI is increasingly becoming part of most people's daily lives. You can find AI systems and programs almost everywhere you go. It is now being used frequently in workplaces and homes.

## At Home

- voice assistants, such as Alexa or Siri
- using facial recognition to unlock smartphones
- film or TV show recommendations on streaming sites
- antivirus software on computers and laptops

## At Work

- looking at data and trying to find patterns or trends
- filtering out potential spam emails
- predictive typing
- chatbots
- automating repetitive tasks, such as sorting parcels and letters

## AI Safety

AI is a fantastic tool for doing lots of different tasks. Just like we have to be careful when we use other tools, we need to be careful when using AI.

## Did You Know...?

The world's first robot citizen was developed in 2016 and is called Sophia. Sophia uses AI technology to imitate human gestures, facial expressions and hold conversations.